

Coaxial Adapter, N-FEM to SMA-FEM

50Ω DC to 18 GHz

Maximum Ratings

Operating Temperature	-55°C to 100°C
Storage Temperature	-55°C to 100°C

Features

- flat response
- excellent VSWR
- passivated stainless steel
- low cost adapters, available from stock

Applications

- interconnection of RF cables and equipment

NF-SF50+
NF-SF50



CASE STYLE: DJ827
PRICE: \$22.95 ea. QTY (1-49)

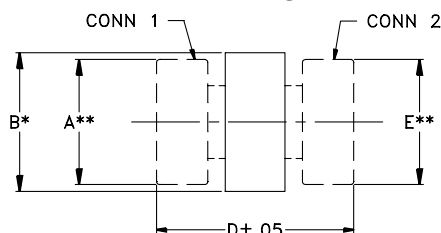
+ RoHS compliant in accordance with EU Directive (2002/95/EC)

See our web site for RoHS Compliance methodologies and qualifications.

Electrical Specifications $T_{AMB}=25^{\circ}\text{C}$

MODEL NO.	CONNECTOR TYPE		FREQUENCY (GHz) f_L-f_U	VSWR (:1) Max.		
	CONN 1	CONN 2		DC-8 GHz	DC-12.4 GHz	DC-18 GHz
NF-SF50(+)	N-FEMALE	SMA-FEMALE	DC-18	1.15	1.20	1.25

Outline Drawing



* MAX FOR DJ826, 827, 836.
** DIM IS ACROSS FLATS
B - OVERALL ADAPTER DIMENSION
BODY/CONNECTOR SHAPE VARIES

Outline Dimensions (inch/mm)

A	B	C	D	D	wt
--	.70	--	1.23	--	grams
--	17.78	--	31.24	--	26.0

Typical Performance Data

FREQ. (MHz)	VSWR (:1)	
	N-FEMALE	SMA-FEMALE
100.00	1.01	1.01
200.00	1.01	1.01
400.00	1.01	1.01
600.00	1.01	1.01
800.00	1.01	1.02
1000.00	1.01	1.02
1500.00	1.01	1.02
2000.00	1.02	1.02
4000.00	1.02	1.02
6000.00	1.05	1.04
8000.00	1.06	1.03
10000.00	1.05	1.06
12000.00	1.13	1.15
14000.00	1.10	1.06
16000.00	1.09	1.14
18000.00	1.17	1.15

